

cb cic vs Martorell (20/09/08)

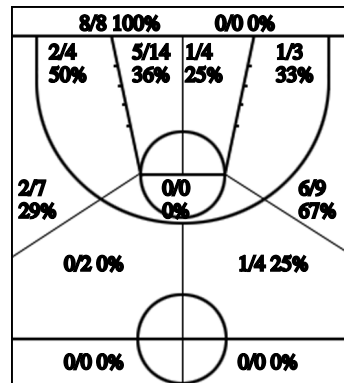
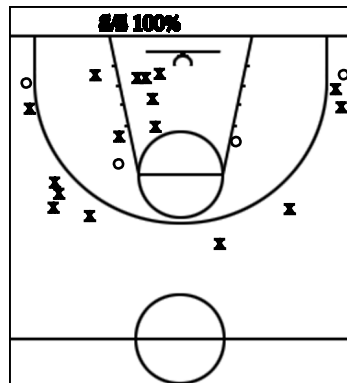
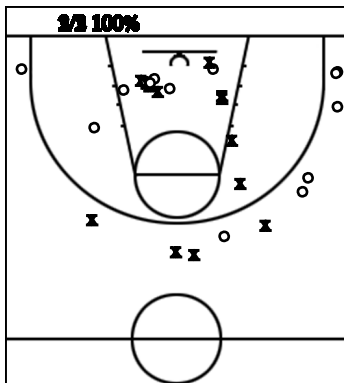
Estadístiques cb cic

Si	Dr	Jugador	Min	Pts	Tirs 2	Tirs 3	Tirs 2c	T.Lliures	Rebots			Taps			Faltes			Val		
									T	RD	RO	As	PR	PP	Fv	Co	Bax		Cm	Re
*	4	marc prades	27	11		3/6 50%	1/3 33%									1	2	1	5	
	5	xavi campillo	7															1	1	
	7	laky																		
	8	joan	9	7		0/1 0%	3/3 100%	1/4 25%	5	4	1			2				2	3	7
*	9	david	22	3	1/1 100%	0/2 0%	0/1 0%	1/2 50%	3	1	2		1	1				1	2	3
*	10	marc	29	9	1/2 50%	1/4 25%	1/2 50%	2/2 100%	5	4	1				1		1	5	1	6
	11	paco	8	2			1/2 50%		1	1								2	3	3
	13	carlos	3															1	-1	
*	14	liris	28	13	0/3 0%	2/3 67%	2/4 50%	3/4 75%	1		1			1			2	2	3	7
*	15	toy	29	10			4/6 67%	2/3 67%	8	4	4	1		2			2	1	3	16
	21	charles	23	16	1/1 100%	3/6 50%	2/5 40%	1/3 33%					1	1	1		2	1	3	11
	24	jose																		
cic		Equip																		
Total		cb cic	185	71	3/7 43%	9/22 41%	14/26 54%	10/18 56%	23	14	9	1	2	7	2		8	17	20	58

Estadístiques Martorell

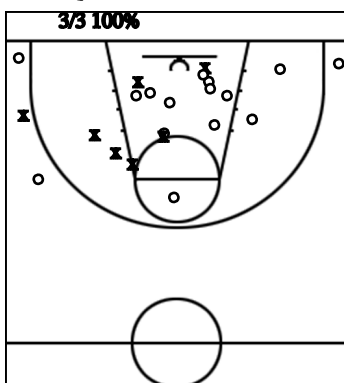
Si	Dr	Jugador	Min	Pts	Tirs 2	Tirs 3	Tirs 2c	T.Lliures	Rebots			Taps			Faltes			Val		
									T	RD	RO	As	PR	PP	Fv	Co	Bax		Cm	Re
*	4	perez	21	3			1/2 50%	1/2 50%	1	1				4			1	5	3	-4
*	5	antolin	15	13		1/3 33%	4/5 80%	2/2 100%				2				1		2	4	13
*	6	sarda	21	9		1/4 25%	3/3 100%		1	1				1				1		5
	7	alvarez	14	2	1/1 100%				1	1						1		1	1	2
	8	garcia	13	11	3/4 75%		2/2 100%	1/2 50%	1	1							1			10
	9	ruiz																		
	10	merino	23	13	1/2 50%	2/5 40%	1/1 100%	3/3 100%										1	3	11
	11	martin	5															3	-3	
*	12	argoye	26	17			6/8 75%	5/11 45%	2	2							2	2	4	13
	13	pons	12	6		1/1 100%	1/1 100%	1/1 100%											1	7
*	14	suso	31	3		1/1 100%	0/1 0%		4	4								4		2
	15	fuentes	4															1	-1	
Mar		Equip																		
Total		Martorell	185	77	5/7 71%	6/14 43%	18/23 78%	13/21 62%	10	10		2		5		2	4	20	16	55

Carta de Tir cb cic

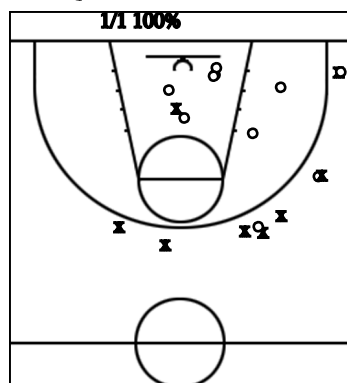


cb cic	P1	P2	P3	P4	T
	19	24	15	13	71
Martorell	P1	P2	P3	P4	T
	23	24	17	13	77

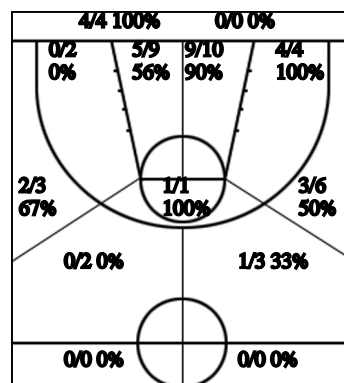
1r i 2n QUART



3r i 4t QUART



TOTAL %



Carta de Tir Martorell

