

C.B. VILASECA vs UE BARBERA (13/10/07)

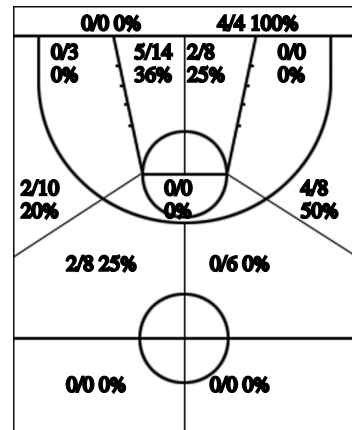
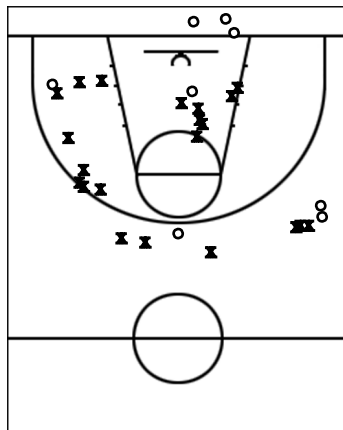
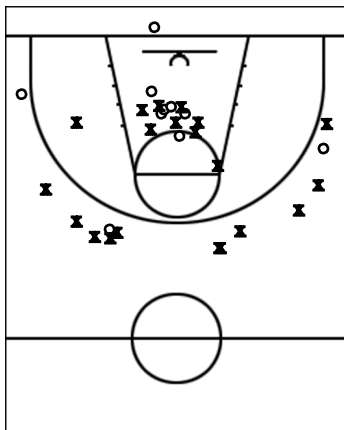
Estadísticas C.B. VILASECA

Si	Nº	Jugador	Min	Pts	Tiros 2	Tiros 3	Tiros 2c	T.Libres	Rebotes			Tapones			Faltas			Val	
									T	RD	RO	As	PR	PP	Fv	Co	Mat		Cm
	4	PLANES E.	19	3	0/2 0%	1/4 25%	0/1 0%					1	1				2	2	-1
	5	ACEVEDO R.																	
	6	REYNES R.	25	3		1/2 50%	0/3 0%						3				1		-5
*	7	CRABTREE A.	36	20		3/12 25%	3/6 50%	5/6 83%	7	7		2	5	4			4	9	22
	8	LOPEZ JM.	1																
*	9	CUBILLAS F.	25	9		0/6 0%	1/4 25%	7/7 100%	1	1		1	2	1			3	3	3
*	10	REVERTE R.	33	11			4/6 67%	3/4 75%	6	4	2			2			2	4	18
	11	CAROD L.																	
*	12	PARICIO X.	34	13		3/5 60%	1/3 33%	2/2 100%	5	3	2			2	1		1	1	11
*	13	PEREZ J.	14	4		0/3 0%	2/2 100%		1	1			1				3		-2
	14	MATAMOROS X.	13		0/1 0%		0/1 0%		3	3			1	3			4	1	-4
C.B.		Equipo															1		-1
Total		C.B. VILASECA	200	63	0/3 0%	8/32 25%	11/26 42%	17/19 89%	23	19	4	4	9	14	2	1	21	20	41

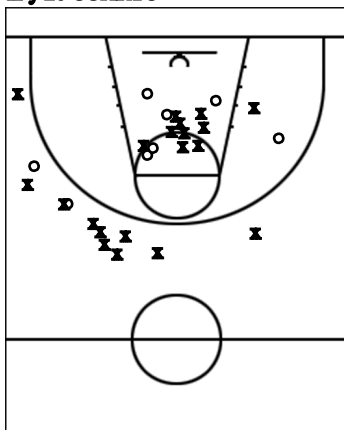
Estadísticas UE BARBERA

Si	Nº	Jugador	Min	Pts	Tiros 2	Tiros 3	Tiros 2c	T.Libres	Rebotes			Tapones			Faltas			Val	
									T	RD	RO	As	PR	PP	Fv	Co	Mat		Cm
	4	GUZMAN D.	25	18	1/2 50%	1/4 25%	5/6 83%	3/4 75%	1	1			1	1			2	1	12
	6	OTERO D.	12	4		0/2 0%	2/2 100%						1	1			1	1	
*	7	SANCHEZ J.	34	15	0/2 0%	2/7 29%	3/5 60%	3/6 50%	8	7	1	1		1	1		1	5	14
	8	CAÑADAS J.	4															1	1
	9	DOMINGUEZ D.	24	8		0/1 0%	2/2 100%	4/6 67%	2	2			1				4	5	7
	10	LAZARO J.																	
*	11	PORQUERAS A.	12			0/1 0%	0/2 0%										1	1	-3
*	12	TORO J.	7	3		1/1 100%	0/1 0%						1				1		2
	13	ARREDONDO S.	11	1				1/2 50%									4		-4
*	16	ALEXANDER M.	36	13			6/9 67%	1/3 33%	10	7	3	1	1	1	1		2	5	23
*	17	CASTELLANO M.	29	10			5/10 50%	0/3 0%	3	2	1		1	2			4	1	1
	19	OLBA S.	6			0/1 0%	0/1 0%		2	1	1		1						1
UE		Equipo																	
Total		UE BARBERA	200	72	1/4 25%	4/17 24%	23/38 61%	12/24 50%	26	20	6	2	5	7	1	2	20	20	54

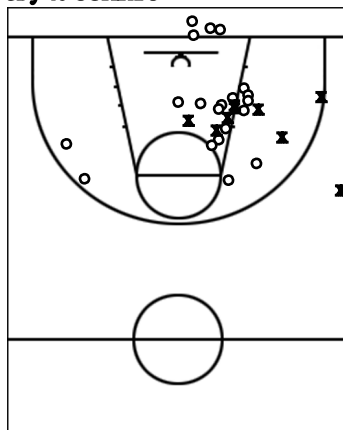
Carta de Tiro C.B. VILASECA



1r y 2o CUARTO



3r y 4o CUARTO



TOTAL %

