

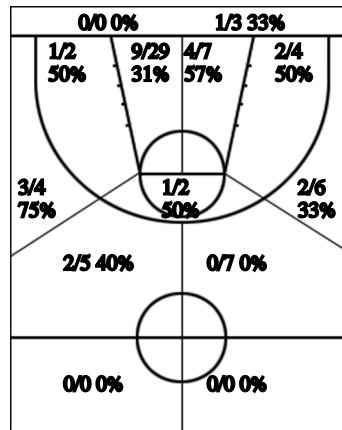
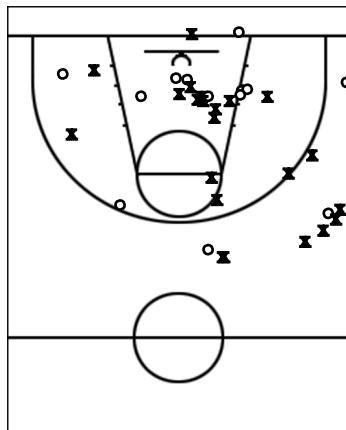
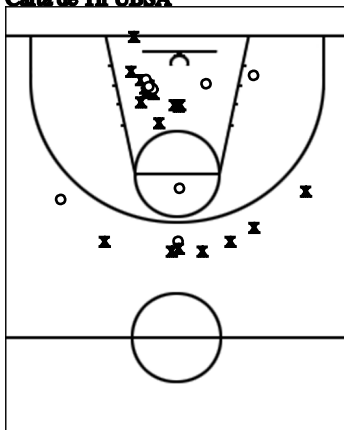
UBSA vs CANET (24/11/07)
Estadístiques UBSA

Si	Dr	Jugador	Min	Pts	Tirs 2	Tirs 3	Tirs 2c	T.Llirres	Rebots			Taps			Faltes			Val		
									T	RD	RO	As	PR	PP	Fv	Co	Exs		Cm	Re
	4	DANI VALLE	37	12	0/1 0%	3/9 33%	1/3 33%	1/2 50%	2	2		1			2			4	7	
	5	TONI OBREGON	3			0/1 0%													-1	
	6	JOAN CARCELLER	14	5	1/1 100%		1/1 100%	1/2 50%	5	4	1							3	3	9
*	7	ADRI MARTINEZ	18	11	0/1 0%	2/2 100%	1/4 25%	3/4 75%	2	1	1	2	2					1	2	13
	8	MARC GONZALEZ	7	3		1/1 100%	0/1 0%					2						3		1
	9	JOSEP ESTEVE	12															2		-2
	10	NANDO LUQUE	18	6			3/6 50%	0/2 0%	8	5	3							1	3	11
*	11	JORDI SANCHEZ	16			0/2 0%	0/2 0%					1						1		-4
*	12	RAUL CASTILLO	18	8	1/2 50%		2/5 40%	2/2 100%	11	8	3	1	1		1			3	2	17
	13	XAVI GONZALEZ	15			0/2 0%			4	4										2
*	14	CARLOS GONZALEZ	32	13	1/2 50%	0/1 0%	5/12 42%	1/2 50%	10	4	6		2	1					3	17
*	15	JUAN CARLOS VACA	30	7	1/1 100%	1/4 25%	1/5 20%		3	3			1					2		
UBS		Equip																		
Total		UBSA	220	65	4/8 50%	7/22 32%	14/39 36%	8/14 57%	45	31	14	4	8	2	1	2		16	17	70

Estadístiques CANET

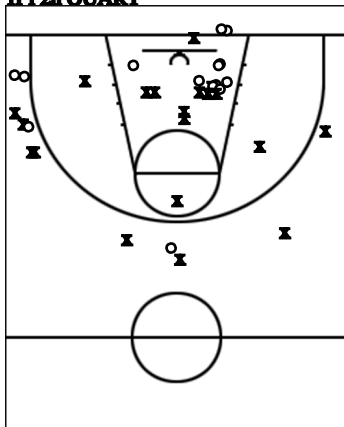
Si	Dr	Jugador	Min	Pts	Tirs 2	Tirs 3	Tirs 2c	T.Llirres	Rebots			Taps			Faltes			Val		
									T	RD	RO	As	PR	PP	Fv	Co	Exs		Cm	Re
	4	EDU	20	6			3/6 50%		5	3	2							3	1	6
	5	CAMPENY																		
	6	BRAVO																		
*	7	BLESA	40	13		3/6 50%	2/4 50%		2	1	1		1					3	5	13
	8	RODRIGUEZ																		
	9	ALBERTO	10	8		0/3 0%	4/6 67%		1		1							3		1
*	10	CARBONELL	23	2	0/2 0%		0/2 0%	2/4 50%	2	2		1			1			2	3	-1
*	11	NAVARRO	45	12		0/3 0%	5/12 42%	2/3 67%	7	3	4			1				3	5	11
*	12	DAVID	42	12		4/13 31%	0/2 0%		4	4				1				1	1	6
	13	CHACON																		
*	14	NIETO	30	3	0/2 0%	1/2 50%	0/2 0%		1	1								2	1	-2
	15	SERGUI																		
CAN		Equip																		
Total		CANET	210	56	0/4 0%	8/27 30%	14/34 41%	4/7 57%	22	14	8	1	1		2	1		17	16	34

Carta de Tir UBSA

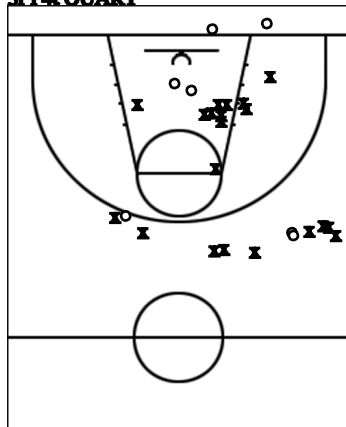


UBSA	P0	P1	P2	P3	T
	13	12	17	23	65
CANET	P0	P1	P2	P3	T
	17	15	17	7	56

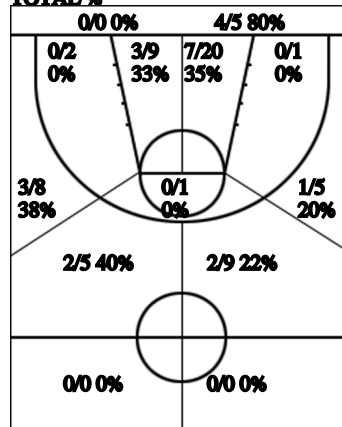
1r i 2n QUART



3r i 4n QUART



TOTAL %



Carta de Tir CANET