

ZAMAR 2000 REUS PLOMS vs GEIBG (12/02/04)

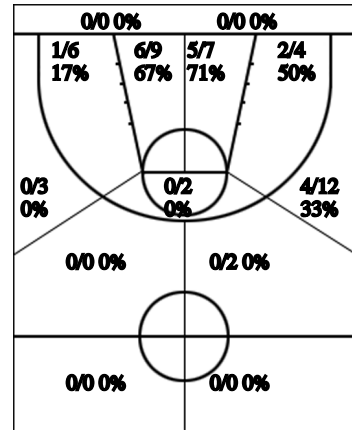
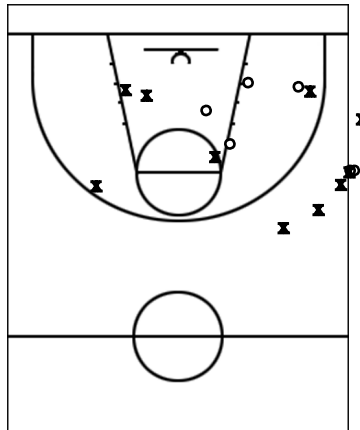
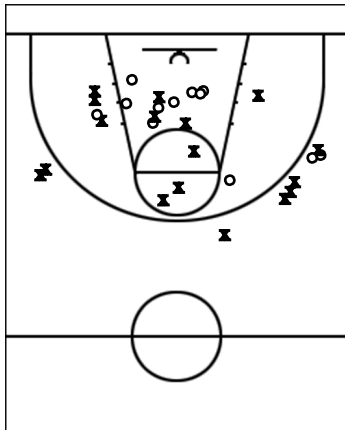
Estadístiques ZAMAR 2000 REUS PLOMS

Si	Dr	Jugador	Min	Pts	Tirs 2	Tirs 3	Tirs 2c	T.Lliures	Rebots			Taps			Faltes					
									T	RD	RO	As	PR	PP	Fv	Co	Esx	Cm	Re	Val
*	4	GALCHERAN	25		0/4 0%		0/3 0%		2		2	1	1					4	1	-6
*	6	PUEYO	33	11	2/3 67%	0/4 0%	2/2 100%	3/4 75%	4	4		1	1	7				4	7	7
	7	DAROCA	5	2			1/1 100%		2	2								2		2
	8	ADSERA	7		0/1 0%	0/1 0%			1	1				1				3		-5
	9	DOMINGO																		
	10	SEDO	23	4		0/2 0%	1/2 50%	2/2 100%	2	1	1	2		3				3	2	1
	11	SANS																		
*	12	MARTINEZ	17	1		0/1 0%		1/2 50%	4	1	3		1	1				4	2	1
*	13	DOMINGUEZ	27	2		0/1 0%	0/1 0%	2/2 100%	5	5				1				3	3	4
*	14	FOLCH	40	26	0/1 0%	4/8 50%	4/4 100%	6/7 86%	7	6	1	2	2	4		1			8	34
	15	BADIA	23	8	1/3 33%		3/3 100%		6	4	2			2		1		2		7
	18	MONLLEO																		
ZAM		Equip												14						14
Total		ZAMAR 2000 REUS...	200	54	3/12 25%	4/17 24%	11/16 69%	14/17 82%	33	24	9	6	19	19		2		25	23	59

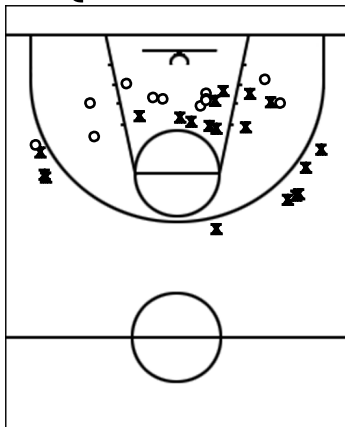
Estadístiques GEIBG

Si	Dr	Jugador	Min	Pts	Tirs 2	Tirs 3	Tirs 2c	T.Lliures	Rebots			Taps			Faltes					
									T	RD	RO	As	PR	PP	Fv	Co	Esx	Cm	Re	Val
*	6	HERRERA	31		0/1 0%	0/4 0%	0/1 0%		2	1	1	1	2	2				4	1	-6
	8	TRABAL	5			0/1 0%						1	2					1		1
*	9	GELABERT	14	3		0/4 0%	1/2 50%	1/2 50%	2	2		1	2	1				3	1	-1
*	10	JUNCA	35	4	1/1 100%	0/3 0%	1/2 50%	0/2 0%	3	3		1	4	1				4	3	4
*	11	ULLATE	30	7	2/2 100%		1/6 17%	1/5 20%	3	3		3						4	5	5
*	14	QUINTANA	33	20		3/6 50%	3/4 75%	5/5 100%	11	6	5		2	2	2			1	8	36
	17	SIRIA	11		0/2 0%		0/1 0%					1								-2
	23	RODRIGUEZ	18	18	1/1 100%	3/6 50%		7/8 88%	3	2	1		1	1				3	5	19
	24	XARGAY	12	4	1/2 50%		1/1 100%						2					2		3
	30	ALGUERO	11	5	1/1 100%		1/2 50%	1/2 50%	2	1	1	1		2				1	1	4
GEI		Equip											9	3						6
Total		GEIBG	200	61	6/10 60%	6/24 25%	8/19 42%	15/24 63%	26	18	8	9	24	12	2			23	24	69

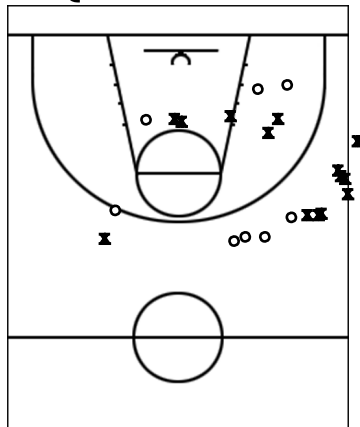
Carta de Tir ZAMAR 2000 REUS PLOMS



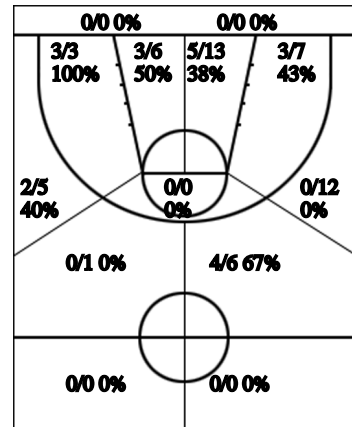
1r i 2n QUART



3r i 4t QUART



TOTAL %



Carta de Tir GEIBG