

C.B.GRUP BARNA vs C.N.REUS FLOMS (11/11/07)

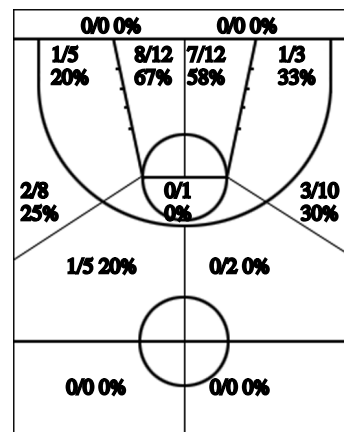
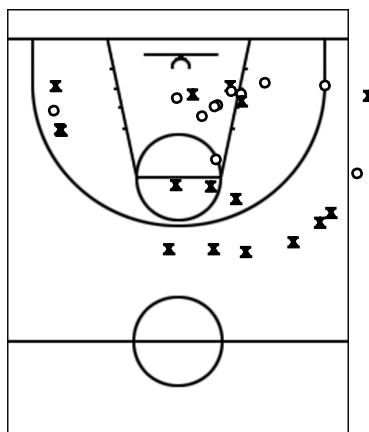
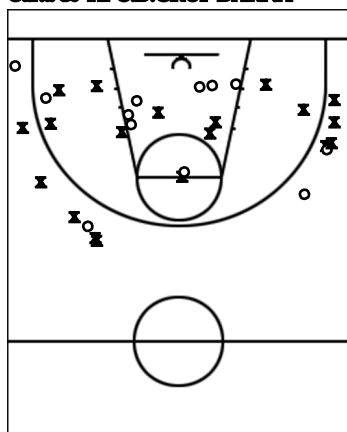
Estadístiques C.B.GRUP BARNA

Si	Dr	Jugador	Min	Pts	Tirs 2	Tirs 3	Tirs 2c	T.Lliures	Rebots			Taps			Faltes			Val		
									T	RD	RO	As	PR	PP	Fv	Co	Ex		Cm	Re
*	5	MIRIAM P.	25	9	0/2 0%		4/5 80%	1/3 33%	7	3	4				1			1	4	15
	6	BEGO	16	4	1/1 100%	0/2 0%	0/1 0%	2/4 50%	2	1	1	1	1					1	3	5
	7	ELENA	9	9		1/2 50%	2/2 100%	2/2 100%					1	1				4	2	6
*	8	JOANA	30	13			2/7 29%	9/11 82%	5	4	1	2	3					2	7	21
	9	DEBO	23	9	1/3 33%	2/5 40%		1/2 50%	8	6	2			1	1			2	2	11
*	10	SILVIA P.	31	13	0/1 0%	3/6 50%	2/4 50%	0/1 0%	4	4								2	3	11
	11	SILVIA M.	14	1		0/4 0%		1/2 50%	2	2		1	2	3		1		2	3	-2
*	13	MERI	15	2	0/1 0%	0/3 0%		2/2 100%	3	2	1	1	1	5				2	1	-3
*	14	ESTHER	14	7		0/2 0%	3/3 100%	1/1 100%	3	2	1		2	1					1	10
	15	ANNA T.	19	6	0/1 0%		2/2 100%	2/4 50%	6	6		2	1	2				1	1	10
	19	GUAYARMINA	4			0/1 0%			2	1	1									1
BAR		Equip											2					1		-3
Total		C.B.GRUP BARNA	200	73	2/9 22%	6/25 24%	15/24 63%	21/32 66%	42	31	11	7	11	15	2	1		18	27	82

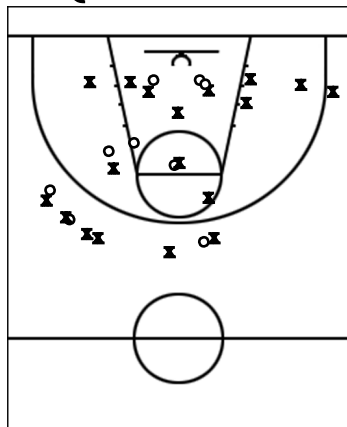
Estadístiques C.N.REUS FLOMS

Si	Dr	Jugador	Min	Pts	Tirs 2	Tirs 3	Tirs 2c	T.Lliures	Rebots			Taps			Faltes			Val		
									T	RD	RO	As	PR	PP	Fv	Co	Ex		Cm	Re
*	4	GALFERAN	20	2		0/1 0%	1/2 50%		1	1				2				5	2	-4
	6	PUEYO	10		0/1 0%	0/1 0%	0/1 0%	0/2 0%	1	1				2				1	1	-6
	7	DAROCA	20	4	0/2 0%		1/3 33%	2/3 67%	3	2	1							4	2	
*	8	ADSERA	22	5	0/1 0%	1/5 20%		2/2 100%						3				4	1	-6
*	9	DOMINGO	36	11	1/2 50%	2/7 29%	0/1 0%	3/6 50%	4	4			3	2				5	4	5
	10	SEDO	17	4	0/1 0%		2/4 50%	0/1 0%	2	2		1		1		1		3	3	1
	12	MARTINEZ																		
*	13	DOMINGUEZ	18				0/2 0%		2	2			2	1				2		-1
*	14	FOLCH	35	12		2/5 40%	2/3 67%	2/2 100%	5	5		1	2	1				2	2	15
	15	BADIA	22	4	0/2 0%		1/3 33%	2/2 100%	8	7	1			1	1	1		3	2	6
REU		Equip																		
Total		C.N.REUS FLOMS	200	42	1/9 11%	5/19 26%	7/19 37%	11/18 61%	26	24	2	2	7	13	1	2		29	17	10

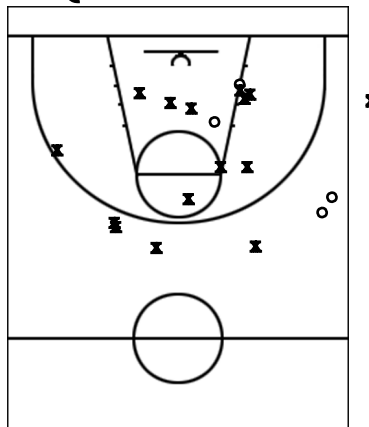
Carta de Tir C.B.GRUP BARNA



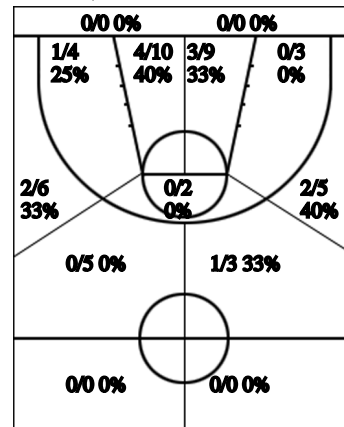
1r i 2n QUART



3r i 4t QUART



TOTAL %



Carta de Tir C.N.REUS FLOMS