

C B GAVA "1" vs C B CASTELAR_VASSI FINQUE... (10/11/07)

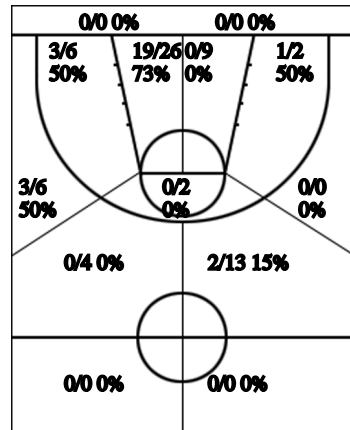
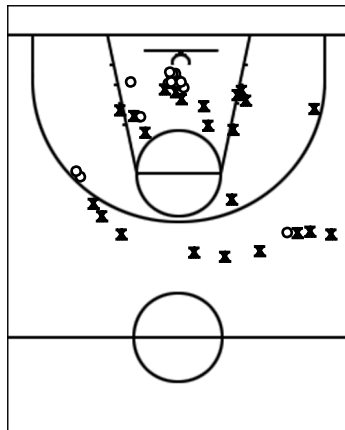
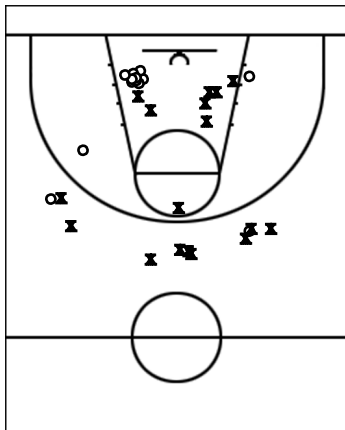
Estadístiques C B GAVA "1"

Si	Dr	Jugador	Min	Pts	Tirs 2	Tirs 3	Tirs 2c	T.Lliures	Rebots			Taps			Faltes				
									T	RD	RO	As	PR	PP	Fv	Co	Esx	Cm	Re
	4	OSCAR PIZARRO	24	10		2/5 40%	1/2 50%	2/2 100%	1	1		5	1				3	3	13
*	5	ADRIA MESTRES	25	2	1/4 25%	0/6 0%	0/1 0%		1	1			2	2			1	3	-5
	6	XAVIER GARRIDO	27	10	1/3 33%	0/4 0%	4/9 44%		1	1		2	1	2	1		3	1	
	7	JAVIER RUZ																	
	8	DAVID SUÑE																	
*	9	FRAN MATEO	29	16	1/2 50%	2/4 50%	3/6 50%	2/2 100%	4	4		1	1				3	2	15
	10	CARLES ALCAZAR	16	1			0/1 0%	1/2 50%	2	2			2	2				1	2
*	11	JORDI RAMON	15	5		1/3 33%	1/1 100%										5		-2
*	12	SERGIO GALA	27	12			6/8 75%		12	5	7						1		21
*	14	JUAN ALBERTO JIME	13				0/1 0%										2	3	
	15	DIDAC SANTACANA																	
	16	ALBERT BARRANCO	24	10	1/1 100%	0/1 0%	4/6 67%		6	2	4				1		3		11
CBG	Equip																		
Total	C B GAVA "1"		200	66	4/10 40%	5/23 22%	19/35 54%	5/6 83%	27	16	11	8	7	6	2		21	13	55

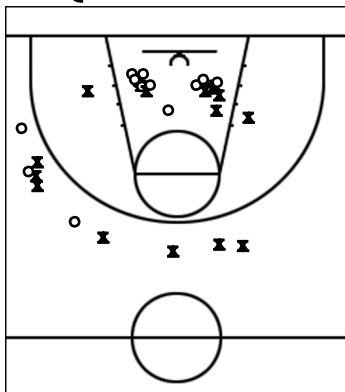
Estadístiques C B CASTELAR_VASSI FINQUE...

Si	Dr	Jugador	Min	Pts	Tirs 2	Tirs 3	Tirs 2c	T.Lliures	Rebots			Taps			Faltes				
									T	RD	RO	As	PR	PP	Fv	Co	Esx	Cm	Re
*	5	carbajal x.	30	6	1/3 33%	1/4 25%	0/1 0%	1/2 50%	5	5				1				5	8
	17	balcells j.																	
	8	caminal r.																	
	9	moix x	6			0/1 0%	0/1 0%										1		-3
	10	esteve x																	
	11	brunet e.																	
*	12	parcerisa o.	29	2		0/3 0%	1/3 33%		1		1				1		2	1	-4
	13	jochen b.	16	3		1/2 50%			2	2							1		3
*	14	figols i.	29	14	0/1 0%		6/10 60%	2/4 50%	9	7	2	1		2			2	2	15
*	15	vadez a.	30	16	1/1 100%	1/5 20%	4/8 50%	3/7 43%	8	7	1			1			1	4	14
*	6	sanchez s	37	18		1/1 100%	4/4 100%	7/10 70%	3	1	2	1		1		1	5	9	21
	19	comellas j.	23	2		0/1 0%	1/2 50%		1	1		1					1		1
CB	Equip			2			1/1 100%												2
Total	C B CASTELAR_VA...		200	63	2/5 40%	4/17 24%	17/30 57%	13/23 57%	29	23	6	3		5		2	13	21	57

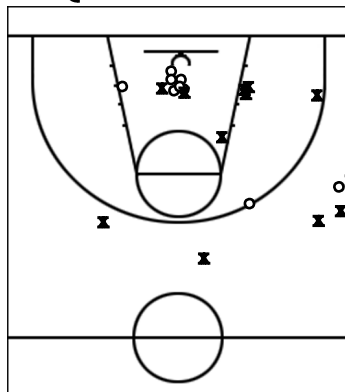
Carta de Tir C B GAVA "1"



1r i 2n QUART



3r i 4t QUART



TOTAL %

