

CB.MOLLET vs Sedi-Mansa (18/05/08)

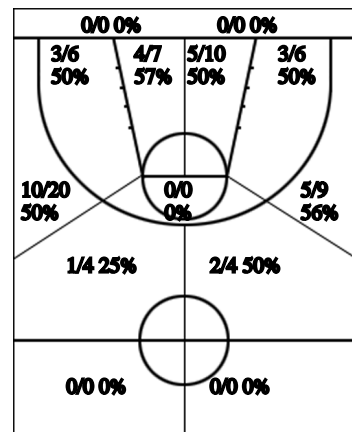
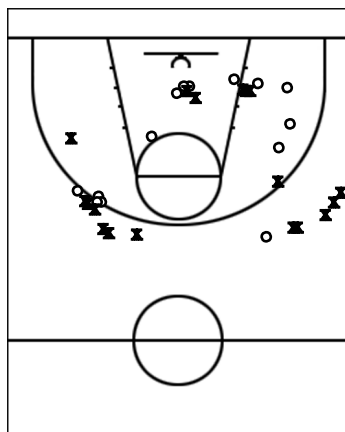
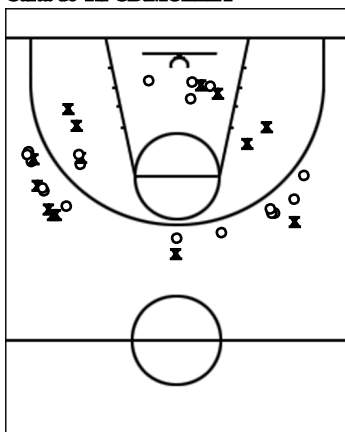
Estadístiques CB.MOLLET

Si	Dr	Jugador	Min	Pts	Tirs 2	Tirs 3	Tirs 2c	T.Lliures	Rebots				Taps			Faltes				
									T	RD	RO	As	PR	PP	Fv	Co	Esx	Cm	Re	Val
	4	DAM,R	20	5		1/6 17%	0/1 0%	2/2 100%	4	4		1		1				2	3	4
*	5	ARENAS,A	32	23	0/3 0%	7/11 64%	1/1 100%		1	1			2	1				3	3	18
	6	CLOTS,J	14															3		-3
*	7	BLANCO,M	7						1	1								1		
*	9	BAS,G	7	2		0/1 0%	1/1 100%												1	2
	11	SANMARTI,J	14	6	0/1 0%	2/4 50%												2		1
	12	RAMONEDA,O	5	3		1/2 50%														2
	14	PAREDES,J	7	3		0/1 0%	1/1 100%	1/1 100%	1	1			1	1				2	2	3
*	15	FERRER,A	35	22	4/4 100%	4/6 67%	0/2 0%	2/2 100%	7	7			1	1				2	3	26
*	16	VILADOMAT,P	30	19		3/6 50%	5/7 71%		4	2	2		1		2	1		3	1	18
	17	MONROS,S	16	6	2/2 100%		1/4 25%											4	1	
	19	ANGLI,J	13		0/2 0%				4	2	2							2	2	2
CB.		Equip												1						-1
Total		CB.MOLLET	200	89	6/12 50%	18/37 49%	9/17 53%	5/5 100%	22	18	4	1	5	5	2	1		24	16	72

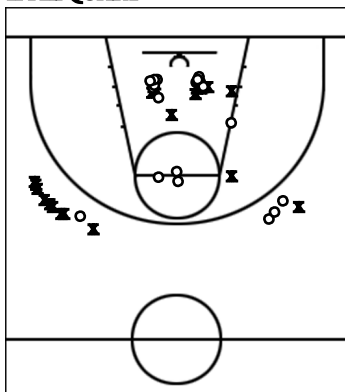
Estadístiques Sedi-Mansa

Si	Dr	Jugador	Min	Pts	Tirs 2	Tirs 3	Tirs 2c	T.Lliures	Rebots				Taps			Faltes				
									T	RD	RO	As	PR	PP	Fv	Co	Esx	Cm	Re	Val
*	4	Marc Martet	15	10			5/9 56%	0/2 0%	6	3	3	1		2		1		3	2	7
*	5	Marc Vila	31	17		3/9 33%	2/2 100%	4/5 80%				2	1	1				2	5	15
*	6	Ferran Vilaro	15			0/1 0%	0/1 0%		2	2			2			1		2		-1
	7	Oscar Ferraz	3	2		0/1 0%	1/2 50%		1		1		1							2
*	8	VILARO,R	34	11		3/5 60%	1/2 50%		9	7	2		1	2				1	9	24
	9	SANSA,F	22	5	0/2 0%	1/6 17%	1/1 100%		4	4				3				2	2	-1
	11	NOVILLO,J	8	2	1/1 100%				2	1	1	1								5
	12	BENI,H	2	2			1/1 100%		1	1										3
*	13	MORENO,I	23	18			8/13 62%	2/4 50%	8	1	7	2	1	1				3	3	21
	14	NOGUEROL,L	11	2	0/1 0%		1/1 100%		5	4	1							2		4
	15	SMITH,J	23	8	0/1 0%		3/9 33%	2/4 50%	9	6	3			2	1				3	10
	18	VIDAL,M	13			0/2 0%			2	2			1	1				1		-1
Sed		Equip												1						-1
Total		Sedi-Mansa	200	77	1/5 20%	7/24 29%	23/41 56%	8/15 53%	49	31	18	6	7	13	1	2		16	24	87

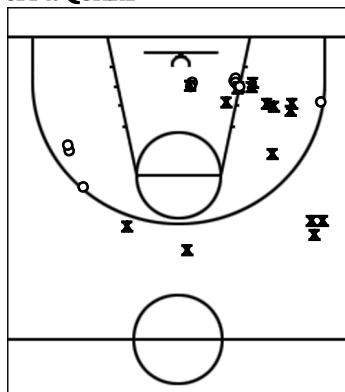
Carta de Tir CB.MOLLET



1r i 2n QUART



3r i 4t QUART



TOTAL %

